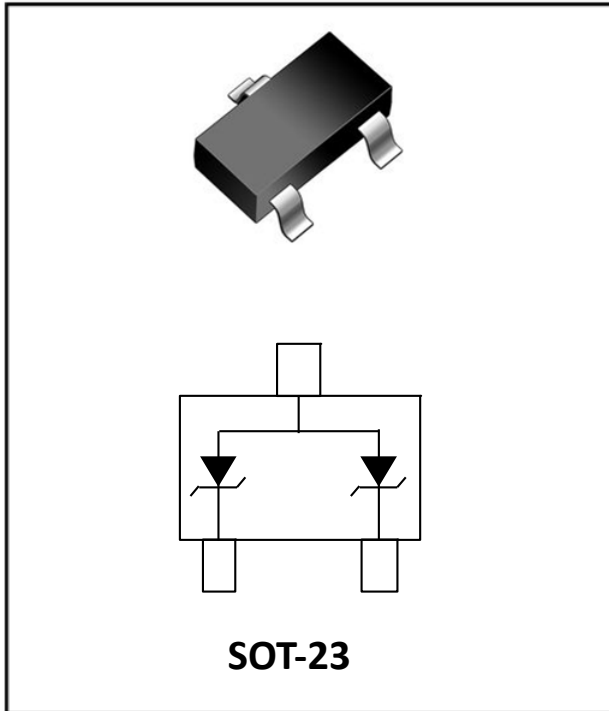


2- Line, Uni-directional, ESD protection diode



Features

- Transient protection for each line according to IEC61000-4-2(ESD): $\pm 16\text{kV}$ contact, $\pm 16\text{kV}$ air IEC61000-4-5:3A($t_p=8/20\mu\text{s}$)
- Low leakage current
- Ultra low clamping voltage
- RoHS Compliant
- Part no. with suffix "Q" means AEC-Q101 qualified

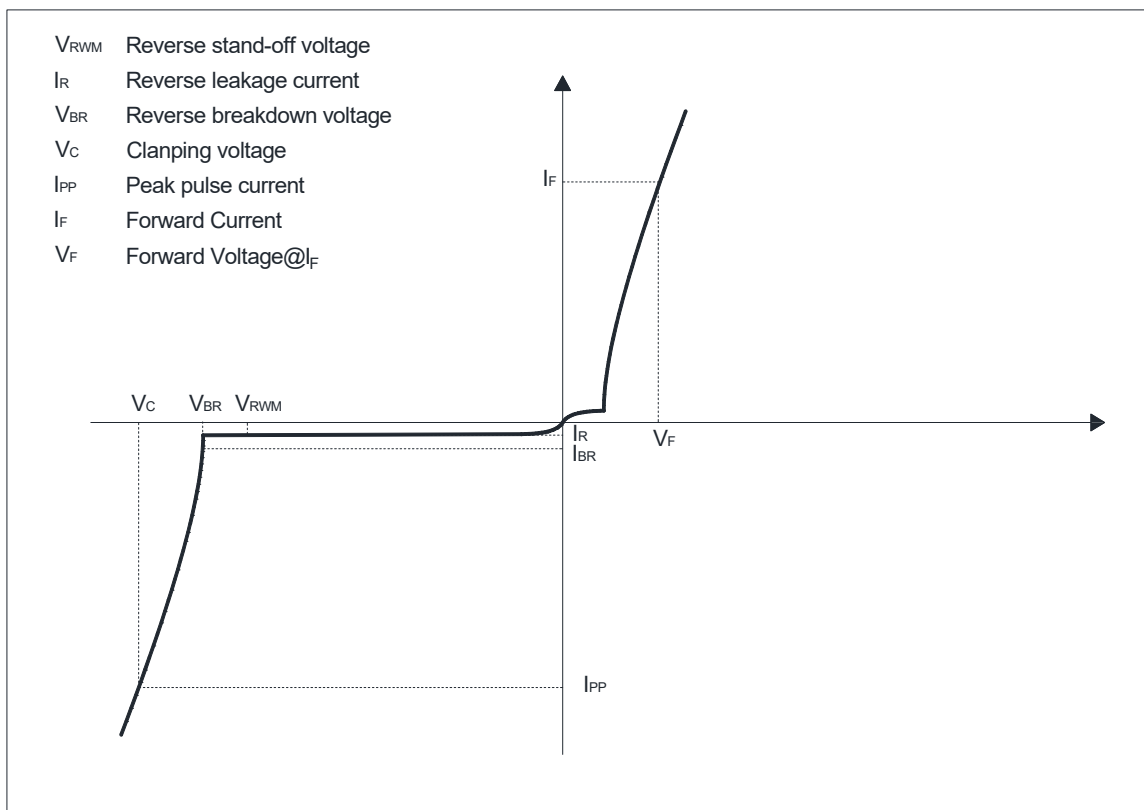
Applications

- Vehicle domain controller ,VCU electrostatic protection
- Electrostatic protection for automotive electronic multimedia interface
- CAN Bus protection
- Automotive applications

Mechanical Data

- Package: SOT-23
- Lead Finish: Matte Tin
- Case Material: "Green" Molding Compound
- Moisture Sensitivity: Level 1 per J-STD-020

■Definitions of electrical characteristics





ESD3602ESQ

■Maximum Ratings

| PARAMETER | SYMBOL | LIMITS | UNIT |
|---|-----------|----------|-------------|
| Peak pulse power ($t_p = 8/20\mu s$) | P_{pk} | 210 | W |
| ESD according to IEC61000-4-2 air discharge | V_{ESD} | ± 16 | KV |
| ESD according to IEC61000-4-2 contact discharge | | ± 16 | |
| Junction temperature | T_J | -55~150 | $^{\circ}C$ |
| Storage temperature | T_{STG} | -55~150 | $^{\circ}C$ |

Notes:

CAUTION: Stresses above those listed in "Absolute Maximum Ratings" may cause permanent damage to the component. This is a stress only rating and operation of the component at these or any other conditions above those indicated in the operational sections of this specification is not implied.

■Electrical Characteristics ($T_J=25^{\circ}C$)

| PARAMETER | Symbol | UNIT | Conditions | Min | Typ | Max |
|--------------------------------|-----------|---------|--------------------------------|-----|-----|-----|
| Reverse Standoff Voltage | V_{RWM} | V | | | | 36 |
| Reverse breakdown voltage | V_{BR} | V | $I_{BR} = 1mA$ | 38 | | 48 |
| Reverse leakage current | I_R | μA | $V_{RWM} = 36V$ | | | 0.5 |
| Forward Voltage | V_F | V | $I_F=10mA$ | | | 1.1 |
| Clamping voltage ¹⁾ | V_C | V | $I_{PP} = 1A, t_p = 8/20\mu s$ | | | 55 |
| | | V | $I_{PP} = 3A, t_p = 8/20\mu s$ | | | 70 |
| Peak Pulse Current | I_{PP} | A | $t_p = 8/20\mu s$ | | | 3 |
| Junction capacitance | C_J | pF | $V_R = 0V, f = 1MHz$ | | 14 | 24 |

Notes:

(1). Non-repetitive current pulse, according to IEC61000-4-5.

■Ordering Information (Example)

| PREFERRED P/N | PACKING CODE | UNIT WEIGHT(mg) | MINIMUM PACKAGE(pcs) | INNER BOX QUANTITY(pcs) | OUTER CARTON QUANTITY(pcs) | DELIVERY MODE |
|---------------|--------------|-----------------|----------------------|-------------------------|----------------------------|---------------|
| ESD3602ESQ | F2 | Approximate 10 | 3000 | 30000 | 120000 | 7 reel |



■ Characteristics (Typical)

Fig.1: 8/20 μ s Pulse Waveform

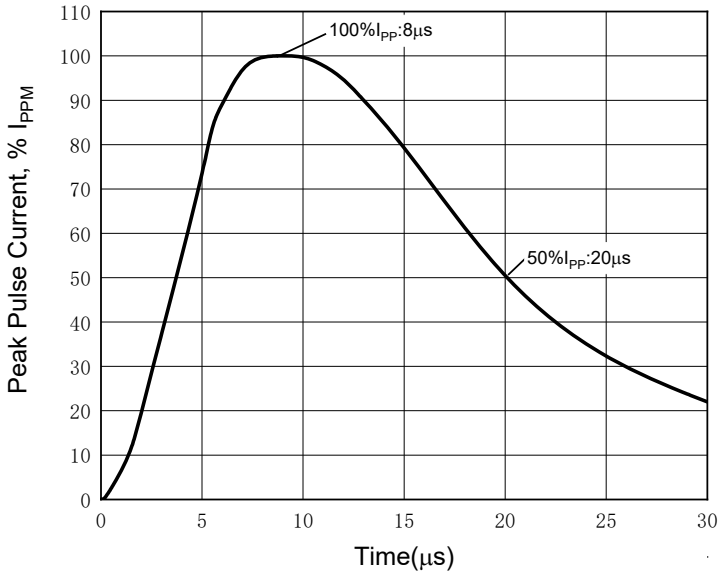


Fig.2: Peak Pulse Current vs Clamping Voltage

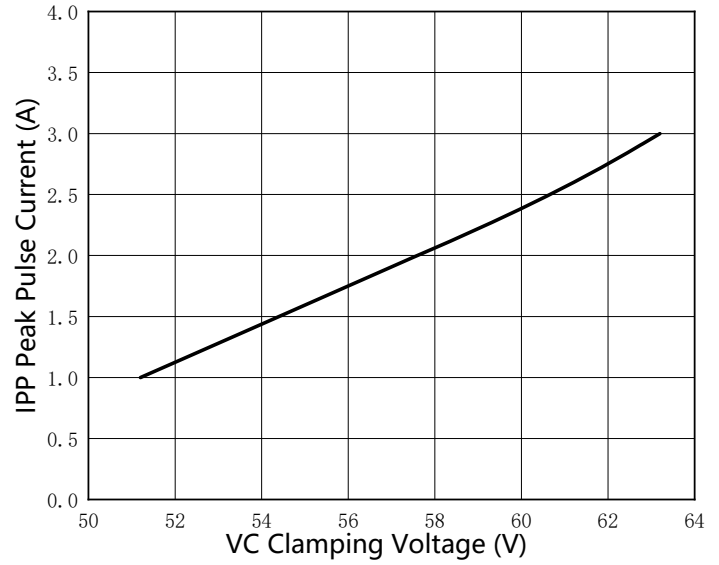


Fig.3: Power Derating Curve

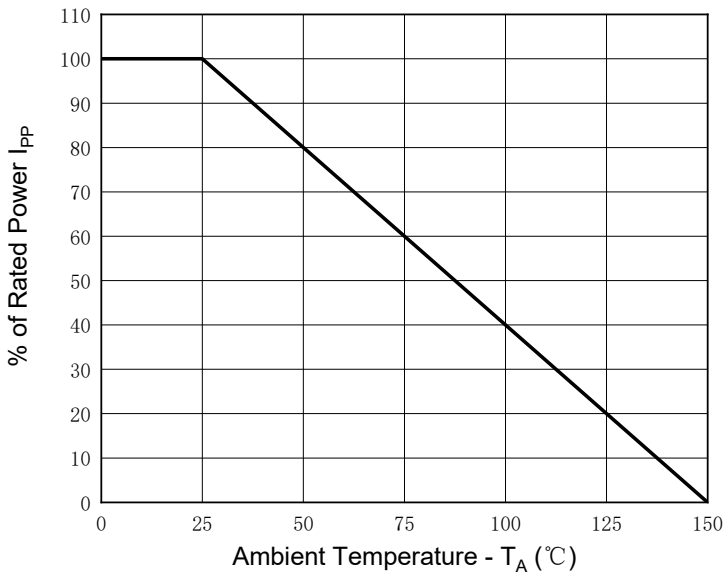
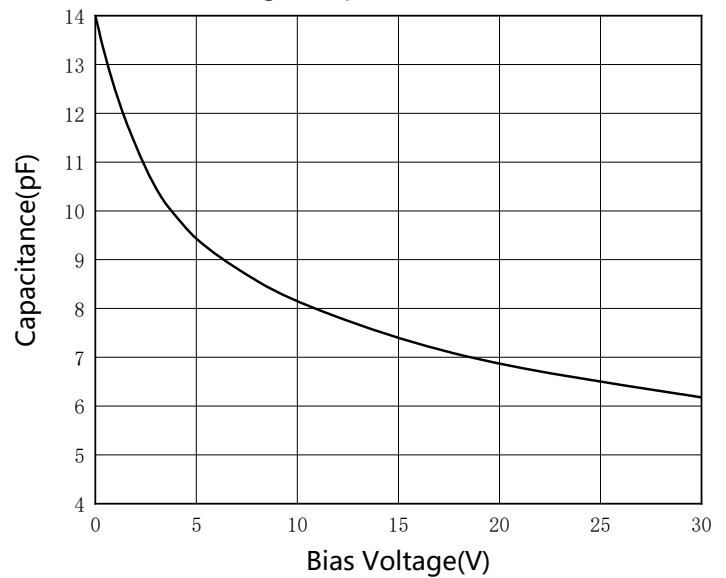


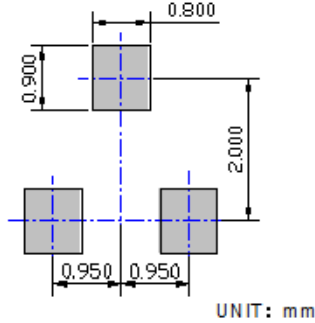
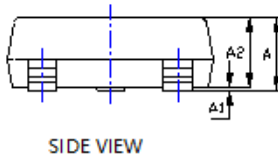
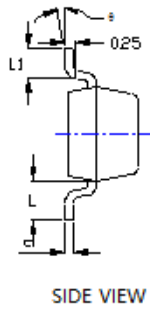
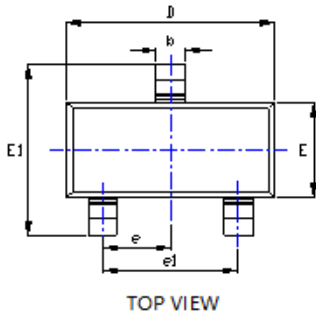
Fig.4: Capacitance vs. Bias





ESD3602ESQ

■ Outline Dimensions

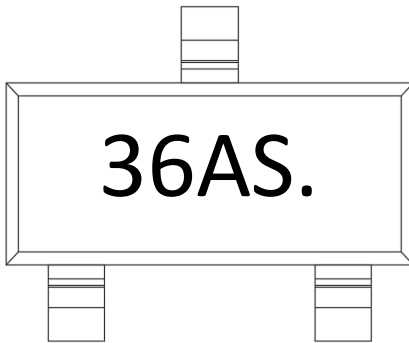


UNIT: mm

| SYMBOL | INCHES | | Millimeter | |
|--------|----------|-------|------------|-------|
| | MIN. | MAX. | MIN. | MAX. |
| A | 0.035 | 0.045 | 0.900 | 1.150 |
| A1 | 0.000 | 0.004 | 0.000 | 0.100 |
| A2 | 0.035 | 0.041 | 0.900 | 1.050 |
| b | 0.012 | 0.020 | 0.300 | 0.500 |
| c | 0.004 | 0.008 | 0.100 | 0.200 |
| D | 0.110 | 0.118 | 2.800 | 3.000 |
| E | 0.047 | 0.055 | 1.200 | 1.400 |
| E1 | 0.089 | 0.100 | 2.250 | 2.550 |
| e | 0.037TYP | | 0.950TYP | |
| e1 | 0.071 | 0.079 | 1.800 | 2.000 |
| L | 0.022REF | | 0.550REF | |
| L1 | 0.012 | 0.020 | 0.300 | 0.500 |
| θ | 0° | 8° | 0° | 8° |

NOTE:
 1. PACKAGE BODY SIZES EXCLUDE MOLD FLASH AND GATE BURRS.
 2. TOLERANCE 0.1mm UNLESS OTHERWISE SPECIFIED.
 3. THE PAD LAYOUT IS FOR REFERENCE PURPOSES ONLY.

■ Marking Information



Note:

1. All marking is at middle of the product body
2. All marking is in laser marking
3. Body color: Black



ESD3602ESQ

Disclaimer

The information presented in this document is for reference only. Yangzhou Yangjie Electronic Technology Co., Ltd. reserves the right to make changes without notice for the specification of the products displayed herein to improve reliability, function or design or otherwise.

The product listed herein is designed to be used with automotive electronics, are not designed for use in medical, life-saving, lifesustaining, or military, Yangjie or anyone on its behalf, assumes no responsibility or liability for any damages resulting from such improper use of sale.

This publication supersedes & replaces all information previously supplied. For additional information, please visit our website [http:// www.21yangjie.com](http://www.21yangjie.com) , or consult your nearest Yangjie's sales office for further assistance.